

Opera Now

www.operanow.co.uk
March 2015 | £4.95

AT THE HEART OF THE OPERA WORLD

LONDONER'S DIARY
Crisis in the capital?

**INTERNATIONAL
OPERA AWARDS 2015**
Meet the finalists

WIN!

32 CDS OF CLASSIC
ROYAL OPERA
PERFORMANCES

**BRYN
TERFEL**
NEW HORIZONS AT 50

PLUS
Critics in
the firing line
Landmarks
around the UK



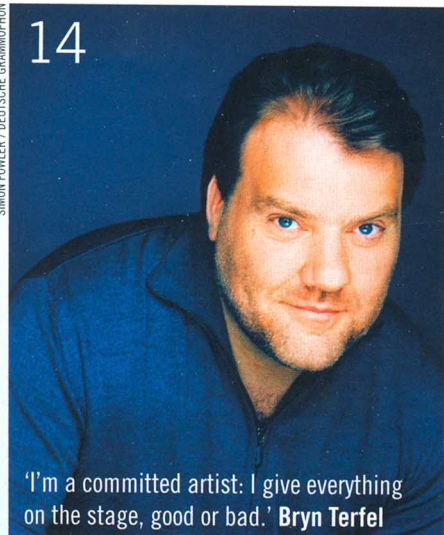
R.

20+ INTERNATIONAL REVIEWS ■ NICOLA LUISOTTI ■ WORLDWIDE OPERA GUIDE

CONTENTS

SIMON FOWLER / DEUTSCHE GRAMMOPHON

14



'I'm a committed artist: I give everything on the stage, good or bad.' **Bryn Terfel**

23

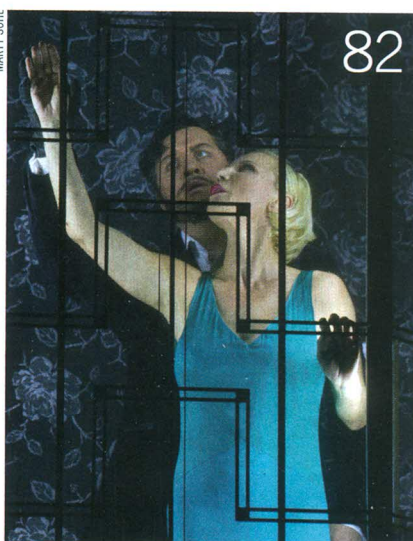


KATRIN RIBBE



77

MARTY SOHL



82

FRONT OF HOUSE

5 EDITORIAL

A capital in crisis?

6 FEEDBACK

Readers' letters, emails and online posts

9 NEWS & NOTES

English National Opera placed under 'special funding arrangements' for two years | Top management arrested at Valencia's Palau de les Arts | Dallas Opera announces new institute for women conductors | and more...

IN THE WINGS

12 ARTIST OF THE MONTH

Russian-born soprano Ilona Domnich

MAIN STAGE

14 COVER FEATURE

Welsh operatic superstar **Bryn Terfel** turns 50 later this year. We take stock of a living legend

23 A WEEKEND IN...

London – the UK's sweepingly cosmopolitan and ultra-cultured capital

27 OPERA LANDMARKS

A guide to the UK's national opera companies in regional centres across the country

32 HIT AND MISS

Warwick Thompson assesses the recent track record of London's Royal Opera House

34 KEEP UP THE GOOD WORK

ENO may be going through a turbulent time but the company's success speaks for itself, says Robert Thicknesse

37 MAKING THE A-LIST

Opera Now introduces the Finalists of this year's International Opera Awards

47 IN THE MOMENT

Conductor Nicola Luisotti explains how understanding the past helps him connect with today's audiences

51 TRAVELS WITH MY OPERA GLASSES

Anthony Ogus reports on a fruitful visit to Switzerland

55 CRITICAL THINKING

Changing attitudes to promiscuity have altered our experience of Mozart's *Don Giovanni*, argues Michael Tanner

58 SQUILLO

Michael White explores the complex love-hate relationship between opera houses and their critics...

59 NEXT ISSUE

Get a sneak preview of *Opera Now* April

61 TAKING PART

Producer Abigail Toland makes the case for involving audiences in the creation of new opera

THE CRITICAL VIEW

63-85 LIVE REVIEWS

ENO scores a triumph with Wagner's *Mastersingers* | Giselle Allen's Salome wows audiences in Belfast | Near-perfect casting for Bellini's *I puritani* in Florence | Tchaikovsky and Bartók make strange bedfellows at the Met | More new productions in London, Glasgow, Leeds, Berlin, Giessen and Brussels

MULTIMEDIA

86 NEW RELEASES

Opera on CD and DVD

BACK STAGE

98 EPILOGUE

Opera Now's cryptic crossword and monthly prize draw for opera lovers

91-97 SPOTLIGHT

Opera Now's INTERNATIONAL GUIDE to the best live performances this spring

PLUS: Opera on TV, online and in cinemas

COMPETITIONS

98 Win 32 CDs of classic Royal Opera performances, recorded live between 1955 and 1997



COVER: Bryn Terfel.
Photo by Simon Fowler / Deutsche Grammophon